

★ W101-III-LC · W101-III-TC · W101-III-LH  
W101-III-TH · W101-III (without hose joint)

## Mounting Model

W101-III-LC



W101-III-TC



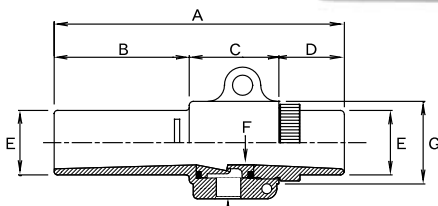
W101-III-LH



W101-III-TH



W101-III  
(without hose joint)



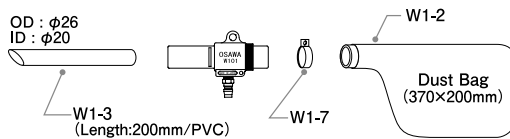
Compressed Air (1/4)

Used Widely in Many Places!!

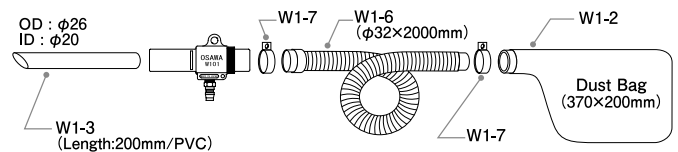
Model	A	B	C	D	E	F (Min ID)	G	Nozzle Orifice	Weight
W101-III	144	67	44.5	32.5	OD:φ32 ID:φ26	φ22	φ41	φ1.4×6holes	250g

■ Please refer to performance chart on page (1).  
■ We offer powerful versions.

### ■ A set (for suction)



### ■ B set (for suction)



★ W301-III-LC · W301-III-TC · W301-III-LH  
W301-III-TH · W301-III (without hose joint)

## Mounting Model

W301-III-LC



W301-III-TC



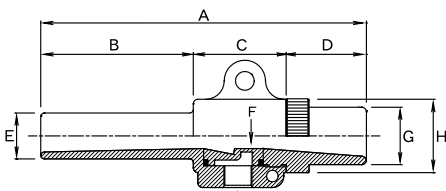
W301-III-LH



W301-III-TH



W301-III  
(without hose joint)

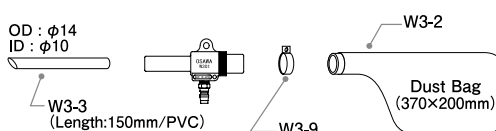


Compressed Air (1/4)

Model	A	B	C	D	E	F (Min ID)	G	H	Nozzle Orifice	Weight
W301-III	142	66.5	40.5	35	OD:φ20 ID:φ14	φ11	OD:φ25 ID:φ18	φ32	φ1.4×3holes	175g

■ Please refer to performance chart on page (1).  
■ We offer powerful versions.

### ■ A set (for suction)



### ■ B set (for suction)

